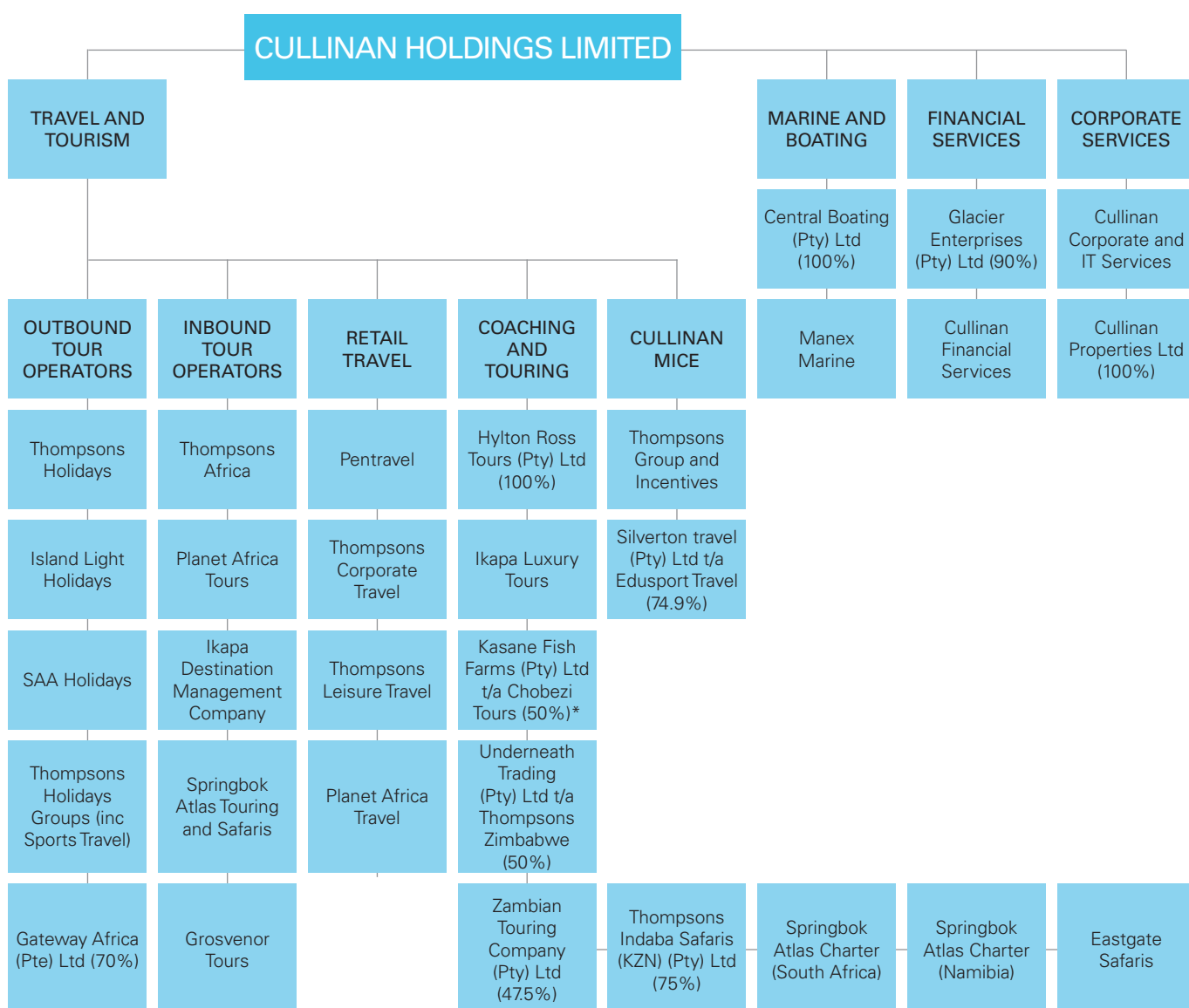


# FIVE-YEAR REVIEW OF INTEGRATED PERFORMANCE

	2013	2012	2011	2010	2009
<b>GROUP STATISTICS</b>					
for the year ended 30 September					
Revenue (R000)	600 553	454 848	393 747	405 069	406 509
Earnings before interest and tax (EBIT) (R000)	66 205	41 787	27 252	33 340	22 566
Profit for the year (R000)	56 998	35 675	22 075	27 856	17 951
Cash generated by operations (R000)	56 194	65 157	90 499	67 990	(1 712)
Current ratio (times)	1.15:1.00	1.21:1.00	1.20:1.00	1.08:1.00	1.14:1.00
Number of employees	1 190	897	867	849	856
<b>Ordinary share performance (cents per share)</b>					
Attributable earnings per share	7.85	4.95	3.07	3.87	2.50
Headline earnings per share	7.54	4.95	3.08	3.75	2.04
Net asset value per share	44.96	26.46	22.51	19.38	15.60
Closing market price	207	110	80	65	45

## GROUP PROFILE



**Notes:**

- All divisions of Cullinan except where shareholding is shown.
- Shareholdings shown are "effective" shareholdings.
- The Group profile is not an exact structure. Certain immaterial divisions have been excluded.